

AI should improve your workflow, *not replace it.*

Document intelligence is becoming the missing layer between fragmented records and reliable downstream workflows.

Most teams do not want another rip-and-replace project.

They want AI to make the systems they already use more useful. Faster renewals. Better reporting. More reliable invoice validation. Less manual hunting across drives, inboxes, folders, and portals.

The workflow may *not* be the problem.

In many environments, the "contract" is not a single document. It is one part of a broader governing chain that may include amendments, pricing schedules, order forms, exhibits, addenda, side letters, notices, invoices, and related records.

If even one of those pieces is missing or disconnected, downstream workflows can break.



Renewal dates may reflect outdated terms.



Pricing logic may miss a later order schedule



Invoice validation may compare against the wrong source



Reporting may look structured while still relying on an incomplete record

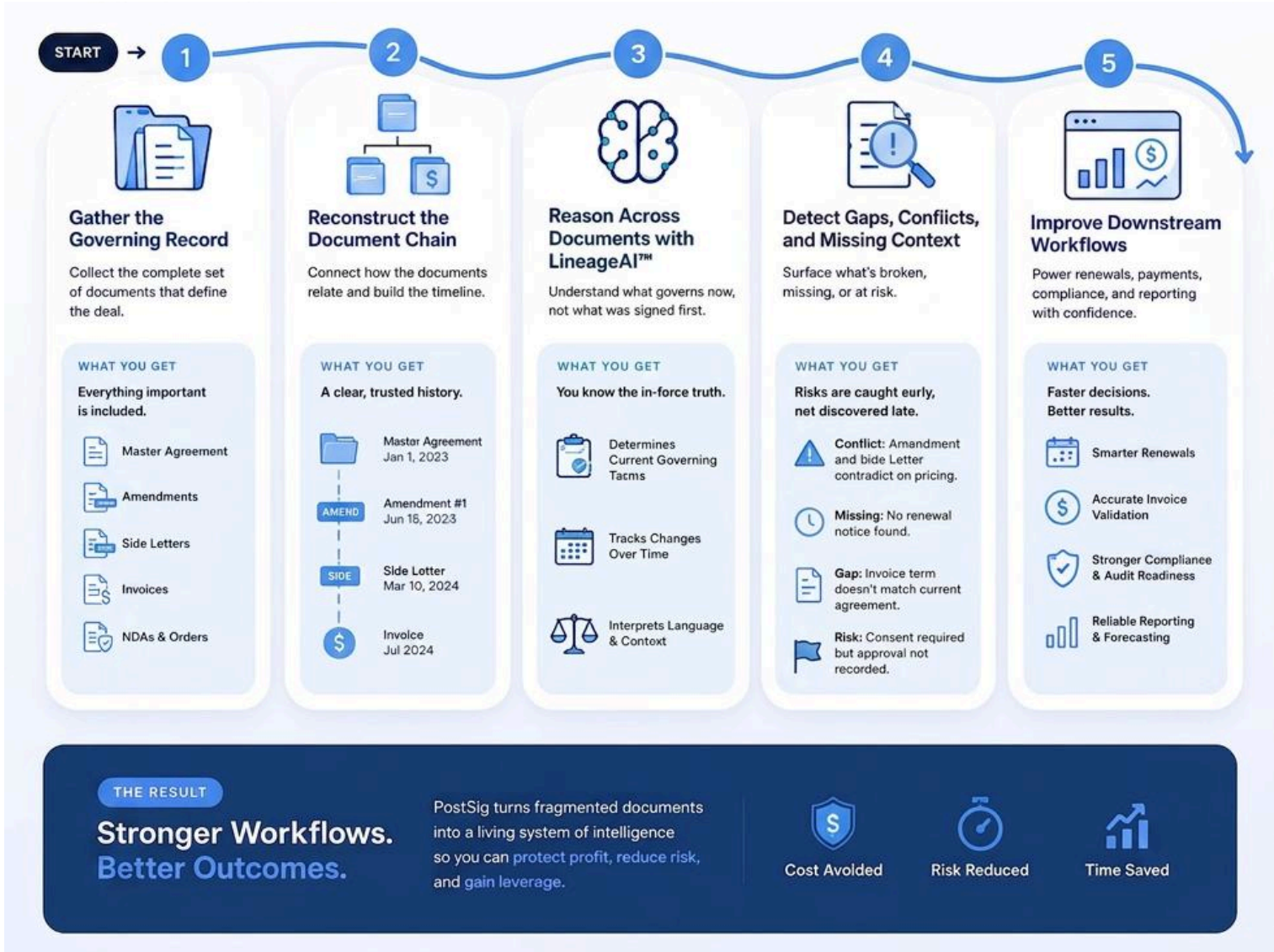
A workflow can look healthy while running on an incomplete version of reality.

What Teams Really Need

They do not need AI that replaces the workflow. They need AI that strengthens it by improving the quality of the records the workflow depends on. That means finding what is missing, connecting what belongs together, and clarifying what actually governs now.

How PostSig *brings it all together*

PostSig helps existing systems work from a more complete, current, and connected governing record. Instead of treating each file as an isolated upload, PostSig helps teams work from a governing record they can trust.



Why This Matters

The real opportunity for AI is not simply to automate tasks faster. It is to improve the context behind the work.

For contract operations, legal ops, procurement, vendor management, and finance teams, that means moving from isolated files to connected records, from static storage to active understanding, and from false confidence to a clearer view of what actually governs the business.

AI should not replace the workflow. It should make the workflow more trustworthy.

USE CASE

Improving TRG or Calero inputs

In market data environments, teams often rely on systems such as TRG or Calero to manage renewals, reporting, invoice workflows, and operational visibility.

Those systems are valuable, but they generally work from the records and logic they are given.

A team may believe a vendor record is complete because the master agreement is in the system and the renewal date is populated. But a later amendment may still be sitting in email, a pricing schedule may never have been uploaded, or a local addendum may be disconnected from the governing agreement.

Before PostSig

- × Incomplete governing record
- × False confidence in renewal or pricing logic
- × Manual cleanup after something breaks

With PostSig

- ⊙ Connected document chain
- ⊙ Better renewal confidence
- ⊙ More reliable invoice checks
- ⊙ Cleaner reporting and fewer surprises

See what
PostSig
can do
for you

PostSig is the document intelligence layer that helps existing workflows run on a more complete, current, and connected governing record.

That means teams can get more value from the systems they already use without taking on another rip-and-replace project.

postsig.com/demo